



**HİCRİ ERCİLİ**

**HİCRİ ERCİLİ**  
-CHEMICALS-

**HİCRİ ERCİLİ**  
-ALUMINIUM SULPHATE-

**HİCRİ ERCİLİ**  
-MARITIMA & SHIPYARD-

**HİCRİ ERCİLİ**  
-COLD STORAGE-

**HİCRİ ERCİLİ**  
-GAS STATIONS-

[www.hicrierci.com.tr](http://www.hicrierci.com.tr)

## OUR FOUNDER



**HİCRİ ERCİLİ**  
(1941 - 2004)

HİCRİ ERCİLİ was born in Bandırma, in 1941. His business story shows similarity with many businessman in same time. in 1970s, when he decided to get a start in business life, economy at the time was under the influence of "inflation" and "foreign currency bottleneck".

He founded business of auto spare parts and chemical transportation without big funds, solely with his gained experience, vision, solid business idea, tenacity and patience. After 1980, the global economy followed by Turkey affected the business strategy of HİCRİ ERCİLİ closely. It was the time to be developed with suitable model to global economy requirements.

In 1999, company management was succeeded by HİCRİ ERCİLİ to his son Murat Ercili. He testified the successes of company and its developments which was founded by himself.

HİCRİ ERCİLİ deceased in 2004.

His ideas and remarks lead to self-improvements of our employees from past to today.



## OUR CORPORATE SOCIAL RESPONSIBILITY

HİCRİ ERCİLİ sustains its leadership role and support in development of social life besides economic growth with the sense of social responsibility. Throughout the life of the founder, the ideas he defended forms our company's essential principles and traditions. HİCRİ ERCİLİ adopts as a main principle to contribute in improvements of communal living in cultural and educational areas.

We elaborate on the projects we support with our work to create sustainable effects, to be long termed, generate social benefits and provide lasting convenience.

Within the scope of our vision of investing in the future of Turkey, HİCRİ ERCİLİ defines involving in long-term and sustainable socially beneficial projects as its primary liability.

HİCRİ ERCİLİ conducts its social services directly or via corporations/foundations.



Hicri Ercili ESA ve CEFIC üyesidir.

## ABOUT HİCRİ ERCİLİ



The business life of our founder HİCRİ ERCİLİ which started in 1970s in auto spare parts trade and chemical transportation, is being continued by the 2nd generation with continuous advancement from that point. Our growth period which started with chemical transportation, auto spare parts trade and fuel sale stations accelerated in 2000s with chemicals export, particularly sulphuric acid, which underlies today's progression. HİCRİ ERCİLİ runs chemical transportation business with self-owned tank trucks and national/international vessels.

Based in Bandırma/Turkey, HİCRİ ERCİLİ has offices and plants in Mersin, İzmit, Çorlu, Yalova and İstanbul. The company continues to provide products and services to its domestic and international customers with its 600,000 tons chemical substance storage and customs clearance capacity and 300 land tank fleets with ADR. HİCRİ ERCİLİ is the first company with the appropriate ADR chemical tanker production for sulphuric acid in Turkey and has reliable high level of customer demands based on their needs. We provide products and services to our exclusive clients in Turkey and abroad with more than 200 self-owned ADR certified trucks with SRC certified drivers.

HİCRİ ERCİLİ wanted to transfer his experience in land transportation to sea transportation and initially purchased M/T "HİCRİ ERCİLİ", and while having experienced staff of specialists, expanded his fleet with the purchase of M/T "AYSENAZ" in 2012 and M/T "BANDIRMA" in 2014 and it also continued to grow up thereby incorporate M/T "KAPIDAG" in 2017. Moreover, it carries on the activities of ship building, alterations and maintenance-repair with its plant on 42.000m2 land located in Yalova Altınova.

Aluminium sulphate production in the HİCRİ ERCİLİ has Turkey's largest capacity facility. It has reached 600.000 tons/year capacity in its plants in Bandırma, Mersin and İzmit which are producing with HİCRİ ERCİLİ brand. The solid aluminum sulphate is also produced in liquid form. In 2016, it is the first company certified the NSF-ANSI 60 standard as it comes up to the requirements of public health and safety in Turkey. HİCRİ ERCİLİ branded aluminium sulphate which is already been imported to 6 continents is rapidly growing on track of becoming the global product of choice. HİCRİ ERCİLİ is the reliable and innovative business associate of private companies and public corporations.

HİCRİ ERCİLİ COLD STORAGE PLANTS initiated its business of cold storage in food sector in 1999 within HİCRİ ERCİLİ. Our company operates in 60.000m2 indoor area within 100.000m2 land with its specialized staff in dry, cold quick freezing process. Our plants provide frozen, cold and standard storage, quick freezing and secondary packing services to many well-known food companies in Turkey.





## HiCRi ERCİLi CHEMICALS AND LOGISTICS

- SULPHURIC ACID
- ALUMINIUM SULPHATE
- LIQUID ALUMINIUM SULPHATE
- NITRIC ACID
- AMMONIA
- HYDROUS AMMONIA
- ALUMINIUM HYDROXIDE
- 75% AND 80% PHOSPHORIC ACID



HiCRi ERCİLi provides regular and/or project-based distribution service to its clients from own and suppliers' chemical warehouses, with over 300 self-asset land transport fleet and 4 chemical vessels for domestic and abroad sales.

Distribution services planned and coordinated from our Central Logistics Department, are being executed by Bandırma, Mersin, Çorlu and İzmit branch offices considering optimum time and cost parameters. Our distribution services by ADR certified vehicles with spill-kits and SRC certified qualified drivers are being tracked with mobile communication, vehicle tracking system and softwares.

In company with project process with the TSE which is the only competent authority in ADR in Turkey, in 2018, type approval certificate was taken for the production of chemical tankers suitable for sulphuric acid with ADR from the institution. Mass production was started for L4BH tank code and volume of 15.7 cubic meters in March 2018. Thus, ADR certified chemical tanker which is suitable for the sulphuric acid has been produced and used by our company for the first time in Turkey. Our goals as logistics are constantly improving our storage and distribution process with customer satisfaction and ensuring our products reaching the destination as a whole at the exact time.







## ALUMINIUM SULPHATE

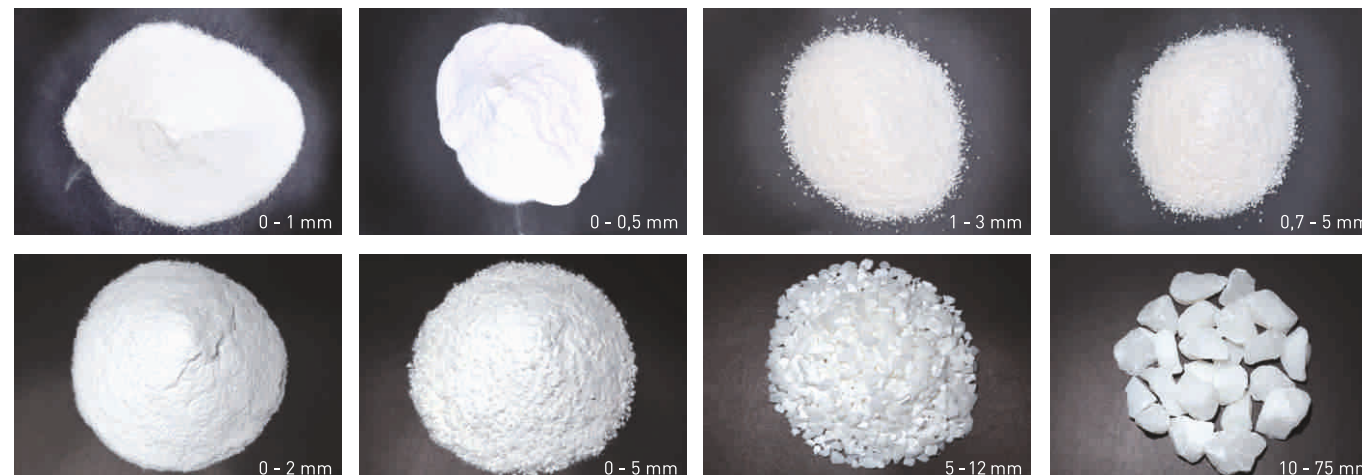
Production of Aluminium Sulphate has started in Bandırma by HICRI ERCİLİ and subsequently started up with Mersin and İzmit plants, ramped up its capacity day by day. Product chain has been enlarged in 2011 with production of liquid aluminium sulphate process. Production of Aluminium Sulphate which is recently being sold in 6 continents, has reached 600.000 t/y. Our product is well accepted by our national and international customers with its quality and possession of product/system certificates (ISO 9001, REACH, ISO 22000, TSE, Halal, ISO 10002, FDA) and maintains its ascending growth. Aluminium sulphate produced with constant improvement philosophy in order to implement eligible World standards, can be used in potable water treatment alongside industrial use and produced in Compliance with TS EN 878 and TS 1867). \*Hicri Ercili is the first and only NSF / ANSI 60 certified manufacturer of Aluminum Sulphate in Turkey (Only products bearing the NSFMark on the product, product packaging, and/or documentation shipped with the product are Certified)

Aluminium sulphate is being widely used in construction chemicals, agricultural sector and industrial sector and in various industries such as paper, textile, pharmaceutical, cosmetic, waste water treatment and fire extinguishing industries (as clarified, flocculant, coagulant, erythrose, adhesive agent and stabilizer). According to customers' requests; powder, granular, lump and liquid products are offered for sale in 25kg and 50 kg polypropylene undercoated or laminated bags or palletized 1 ton big-bags or bulk form.

**Product Name:** Aluminium Sulphate **CAS-No.** 10043-01-3

**REACH Registration Number:** 01-2119531538-36-xxxx **EC No.** 233-135-0

Solid Aluminium Sulphate	Liquid Aluminium Sulphate		
<b>Chemical Formula:</b> Al <sub>2</sub> (SO <sub>4</sub> ) <sub>3</sub> 14,33 H <sub>2</sub> O <b>Al<sub>2</sub>O<sub>3</sub>:</b> 17,00% min. <b>Water Insoluble Substance:</b> 0,3 max. <b>Fe<sub>2</sub>O<sub>3</sub> % :</b> 0,02% max. <b>pH (1%solution):</b> 3,50 min. <b>Arsenic (As):</b> 14mg/kg Al max. <b>Cadmium ( Cd ):</b> 3mg/kg Al max. <b>Chrome ( Cr ):</b> 30mg/kg Al max. <b>Mercury ( Hg ):</b> 4mg/kg Al max. <b>Nickel ( Ni ):</b> 20mg/kg Al max. <b>Lead ( Pb ):</b> 40mg/kg Al max. <b>Antimony ( Sb ):</b> 20mg/kg Al max. <b>Selenium ( Se ):</b> 20mg/kg Al max.		<b>50 % Solution</b>	<b>52 % Solution</b>
	% Al <sub>2</sub> O <sub>3</sub>	8,00	8,42
	% Fe <sub>2</sub> O <sub>3</sub>	0,007	0,007
	% Water Insoluble	0,01	0,01
	pH	2,4	2,4
	Density gr/cm <sup>3</sup>	1,33	1,34
	View	Liquid	Liquid
	Appearance	Clear	Clear
<b>PHYSICAL SPECIALITIES</b> <b>Appereance:</b> Clear <b>Absolute Density:</b> 1,7 gr/cm <sup>3</sup> <b>Lumps:</b> 25-75mm <b>Granular:</b> 10-25 mm <b>Powder:</b> 0-1 mm, 0-2 mm, 0-3 mm  <b>TYPES OF PACKING</b> 25 kg bags, 50 kg bags, 1000 kg big-bags  <b>AREAS OF USAGE</b> Potable Water Treatment, Waste Water Treatment	<b>HEAVY METALS</b>		
	<b>Arsenic (As)</b>	Max. 14 mg / kg Al	
	<b>Cadmium (Cd)</b>	Max. 3 mg / kg Al	
	<b>Chrome (Cr)</b>	Max. 30 mg / kg Al	
	<b>Mercury (Hg)</b>	Max. 4 mg / kg Al	
	<b>Nickel (Ni)</b>	Max. 20 mg / kg Al	
	<b>Lead (Pb)</b>	Max. 40 mg / kg Al	
	<b>Antimony (Sb)</b>	Max. 20 mg / kg Al	
	<b>Selenium (Se)</b>	Max. 20 mg / kg Al	
	<b>Temperature ( C )</b>	<b>Viscosity (m.Pa.s)</b>	
	0	40,00	
	10	26,50	
	20	18,60	
	30	13,20	
	40	8,80	



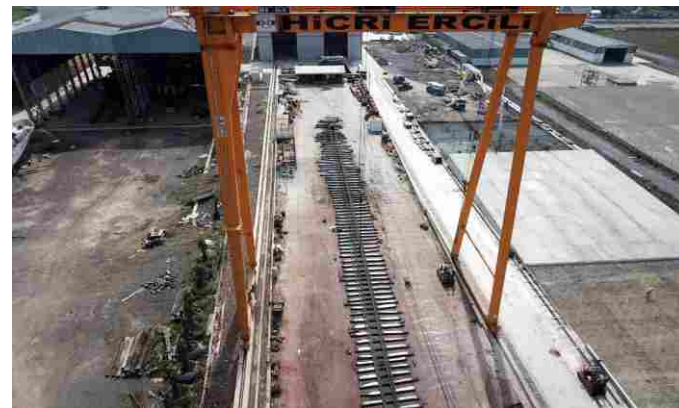


## MARITIME AND SHIPYARD

HiCRi ERCiLi has started its maritime business in 2009 by transferring its 30-year logistics experience in chemicals to maritime transportation in order to develop and grow. The importance of our times rising star logistics, is being understood better day by day and development and innovation studies in this field are increasing rapidly. Parallel to increasing studies, sub-logistic fields containing chemical logistic procedure and rules emerged far substances those show internal differences and have unique distinctive importance.

Within the scope of that increasing importance, we aim to be your reliable and innovative solution partner with our chemical tanker fleet. We offer logistic services from Turkish ports to worldwide ports with the utility of our wide and reliable agency network provide, with the most convenient services and price options. HiCRi ERCiLi offers the best service with its specialized staff in transportation of dangerous goods, in accordance with rules and regulations.

HiCRi ERCiLi TERSANECİLİK SAN. ve TİC. A.Ş. was founded by HiCRi ERCiLi, In 2015 by taking over the well-known company in the sector, Okan Tersane San. Ve Tic. A.Ş far sustainable growth in the maritime sector. Then in 2017, taking over Vov Tersanesi Gemi İnş. San. Ltd. Şti, it increased the area of 22.000 m2 to 42.000 m2. Continuing investments in this field fastly, including ship construction, maintenance and repair, it will be our first priority for offered products and services to our customers to be satisfactory in quality, timing and cost aspects without making any concessions on quality, safety, respect to nature and high productivity.







**Name:** M/T “HİCRİ KAAAN”  
**IMO Number:** 8508670  
**Flag:** Turkey  
**Homeport:** Istanbul  
**Type of Vessel:** Oil / Chemical Tanker  
**Classification Society:** TURKISH LLOYD  
**Class Notation:** Hull + 100A5 with freeboard 1.810 m ESP T1D21T3D10  
Chemical Tanker Type-2, Oil Tanker, Engine; MC E AUT  
**Delivered Date:** 1986, Mitsubishi Heavy Industries Ltd Shimonoseki Shipyard  
**Owner:** Hicri Ercili Deniz Nakliyat Kimyevi Maddeler San. ve Tic. Ltd. Şti.  
**Manager:** Hicri Ercili Deniz Nakliyat Kimyevi Maddeler San. ve Tic. Ltd. Şti.

<p><b>DIMENSIONS</b> Length Over All (LOA): 108.50 m Length Between Perpendiculars (LBP):101.07 m Extreme Breadth (Beam): 17.80 m Moulded Depth: 9.80 Metres Keel to Masthead (KTM): 39.80 m Bow to Center Manifold (BCM): 49.4 m</p> <p><b>TONNAGES</b> Net Tonnage: 1,608 Gross Tonnage: 5,359 Suez Canal Net Tonnage (SCNT): 4241,28 Panama Tonnage: 4080</p> <p><b>LOADLINE INFORMATION</b> Summer Draft: 8,021 Summer Freeboard: 1,810 Summer Deadweight: 7859 FWA: 175 mm TPC Immersion at Summer Draft: 17,23 ton Draft Fore at Normal Ballast Cond.: 3.6 m Draft Aft at Normal Ballast Cond.: 5.6 m</p> <p><b>CARGO TANK CAPACITIES</b> Center Tank Total Capacities (98 %): 4,865 Cub Stop 8 C Tank Capacity (98 %): 737.9 Cub Total Cargo Tank Capacity (98 %): 8140.0 Cub</p>	<p><b>CARGO AND BALLAST PUMPING SYSTEM</b> Main Cargo Pump Number: 8 Type: Deepwell Capacity: 200 Cub /H Main Cargo Pump Number: 12 Type: Deepwell Capacity: 80 Cub / H Cargo Emergency Pump: 1 Type: Portable Capacity: 80 Cub / H Ballast Handling Main Pump: 2 Type: Centrifugal Capacity: 250 Cub / H</p> <p><b>CARGO HEATING</b> Are There Coils In Cargo Tanks: Yes Total Capacity Of Boilers: 14500 Kcal</p> <p><b>ENGINE DEPARTMENT</b> Main Engine: MITSUBISHI - 6 UEC 45L Output ME KW: 4147 KW Aux. Engines: 2 x DAIHATSU - 6 DL 20 Aux. Engines KW: 550 KW Shaft Gen KW: 625 KW Speed: 13,5 Knot</p>
--	--

BANDIRMA



**Name:** M/T “BANDIRMA”  
**IMO Number:** 9120243  
**Flag:** Panama  
**Homeport:** Panama  
**Type of Vessel:** Oil / Chemical Tanker  
**Classification Society:** Bureau Veritas  
**Class Notation:** + 100 A1 CHEMICAL TANKER  
**Ship Type 2\*:** SG 1.1 CR (s.s.t) In association with a list of defined cargoes.  
**Owner:** Transchem Shipping Inc.  
**Manager:** Hicri Ercili Deniz Nakliyat Kimyevi Maddeler San. ve Tic. Ltd. Şti.

**DIMENSIONS**

Length Over All (LOA): 121.00 m  
Length Between Perpendiculars (LBP): 113.22 m  
Extreme Breadth (Beam): 18.50 m  
Moulded Depth: 10.075 m  
Keel to Masthead (KTM): 35.00 m  
Bow to Center Manifold (BCM): 61.00 m  
Stern to Center Manifold (SCM): 60.00 m  
Distance Bridge Front To Center Of Manifold: 34 m

**TONNAGES**

Net Tonnage: 2,714  
Gross Tonnage: 6,085  
Suez Canal Tonnage Net (SCNT): 6,600.94

**LOADLINE INFORMATION**

Summer Draft: 7.4 m  
Summer Freeboard: 2.68 m  
Summer Deadweight: 9,630.70 m  
FWA: 164 mm  
TPC Immersion at Summer Draft: 19.0 ton  
Draft Fore at Normal Balast Condition: 3.99 m  
Draft Aft at Normal Balast Condition: 5.35 m

**CARGO TANK CAPACITIES**

Total Cubic Capacity (98%, Excluding Slop Tanks): 9.763,2 Cub  
Slop Tanks 6 P/S Capacity (98 %): 1291,2 Cub  
Filling Restriction are: Center Tanks  
SG up to 1.10 / Temp. 70 C Degrees  
Max. Permissible Depth of Filling as Apercentage of Tank Depth: 1.10/Actual cargo SG x 100

**CARGO AND BALAST PUMPING SYSTEM**

Main Cargo Pump Number: 2  
Type: Deepwell  
Capacity: 300 Cub /H  
Main Cargo Pump Number: 12  
Type: Deepwell  
Capacity: 200 Cub / H  
Cargo Emergency Pump: 1  
Type: Portable  
Capacity: 70 Cub / H  
Balast Handling Main Pump: 2  
Type: Centrifugal  
Capacity: 250 Cub / H

**CARGO HEATING**

Are There Coils In Cargo Tanks: Yes  
Total Capacity Of Boilers: 2000 kw

KAPIDAĞ



**Name:** M/T "KAPIDAĞ" IMO Number: 9034731  
**Flag:** Panama  
**Homeport:** Panama  
**Builder:** YVC • Yssel Vliet Combinatie B. V Rotterdam  
**Date Delivered:** 09 Feb 1993  
**Type of Vessel:** Oil/Chemical Tanker IMO Type II/III  
**Classification Society:** Bureau Veritas (BV)  
**Class Notation:** A1,Chemical Carrier, Oil Carrier, AMS, ACCU, PORT, TCM  
**Owner:** Blue Wave Shipping and Trading Corp.  
**Manager:** Hicri Ercili Deniz Nakliyat Kimyevi Maddeler San. ve Tic. Ltd. Şti.

<p><b>DIMENSIONS</b> Length Over All (LOA):113.638 m Length Between Perpendiculars (LBP): 107,4 m Extreme Breadth (Beam): 17.50 m Moulded Depth: 11.2 m Keelto Masthead (KTM):34,5 m Bow to Center Manifold (BCM): 59.9 m Stern to Center Manifold (SCM): 53.7 m Distance Bridge Front to Center of Manifold: 30 m</p> <p><b>TONNAGES</b> Net Tonnage: 2,053 Gross Tonnage: 5,499 Suez Canal Gross Tonnage (SCGT): 5,950,9 Panama Tonnage: 5960,84</p> <p><b>LOADLINE INFORMATION</b> Summer Draft: 8,01 m Summer Freeboard: 2,91 m Summer Deadweight: 8674 mt FWA: 174mm TPC at Summer Draft: 17,2 ton Draft Fore at Normal Ballast Condition: 3.2 m Draft Aft at Normal Ballast Condition: 5.35 m</p> <p><b>ENGINE DEPARTMENT</b> Main Engine: BERGEN BRM - 9 Output ME KW: 3640 KW - 750 RPM Aux. Engines: 2 x Bergen Aux. Engines KW: 480 KW Shaft Gen KW: 500 KW Speed: 12 Knot Bow</p>	<p><b>CARGO TANK CAPACITIES</b> Center Tank Total Capacities (98 %): 5258,2 Cub Slop Tank Capacity (98%): 256 Cub Wing Tanks (P /S Combined 98%): 2689,9 Cub Filling Restriction are: Central SS Tanks: max SG 1.86, max SG 2.17 at max. 84% fillrated Wingtanks EpoxyCoated.: max. SG 1.025, max. SG 1.6 at max.64% fillrate Type: El/Hydr. Powerpacks Capacity: 250 Cub/H</p> <p><b>CARGO AND BALAST PUMPING SYSTEM</b> Main Cargo Pump Number: 6 Type: Deepwell Capacity: 150 Cub / H Main Cargo Pump Number. 5 Type: Deepwell Capacity: 100 Cub / H Main Cargo Pump Number: 1 Type: Screw Capacity: 200 Cub / H Ballast Handling Main Pump: 2 Type: Centrifugal Capacity: 200 Cub / H</p> <p><b>CARGO HEATING</b> Are There Coils in Cargo Tanks: Yes Total Capacity Of Boilers: 16720 Kcal</p>
--	---



AYŞENAZ



**Name:** M/T “AYŞENAZ”  
**IMO Number:** 9034743  
**Flag:** Turkey  
**Homeport:** İstanbul  
**Builder:** YVC – Yssel Vliet Combinatie B.V Rotterdam  
**Date Delivered:** 23 Dec 1993  
**Type of Vessel:** Oil /Chemical Tanker IMO Type II/III  
**Classification Society:** BUREAU VERITAS  
**Class Notation:** 1A1 Tanker for Chemicals and Oil ESP E0 HL (1.86 ) TMON  
**Owner:** Hicri Ercili Deniz Nakliyat Kimyevi Maddeler San. ve Tic. Ltd. Şti.  
**Manager:** Hicri Ercili Deniz Nakliyat Kimyevi Maddeler San. ve Tic. Ltd. Şti.

<p><b>DIMENSIONS</b> Length Over All (LOA):113.638 m Length Between Perpendiculars (LBP): 107.438 m Extreme Breadth (Beam): 17.50 m Moulded Depth: 11.213 m Keel to Masthead (KTM):35.40 m Bow to Center Manifold (BCM): 53 m Stern to Center Manifold (SCM): 60.52 m Distance Bridge Front to Center of Manifold: 30 m</p> <p><b>TONNAGES</b> Net Tonnage: 2,456 Gross Tonnage: 5,401 Suez Canal Net Tonnage (SCNT): 4,916 Panama Tonnage: 4,848</p> <p><b>LOADLINE INFORMATION</b> Summer Draft: 8,013 Summer Freeboard: 2,913 Summer Deadweight: 9108 FWA: 174 mm TPCImmersion at Summer Draft: 17,2 ton Draft Fore at Normal Ballast Condition: 3.2 m Draft Aft at Normal Ballast Condition: 5.35 m</p> <p><b>CARGO TANK CAPACITIES</b> Center Tank Total Capacities (98 %): 5251.5 Cub Slop 1st Tank Capacity (98 %): 41,06 Cub Slop 2nd Tank Capacity (98%): 256 Cub Wing Tanks (P/S Combined 98%): 4251,4 Cub</p>	<p>Filling Restriction are: Center Tanks s.g. 1.86, s.g 2.17 at max 84, Wing tanks s.g 1.025, s.g 1.68 at max .61</p> <p><b>CARGO AND BALLAST PUMPING SYSTEM</b> Main Cargo Pump Number: 6 Type: Deepwell Capacity: 150 Cub /H Main Cargo Pump Number: 17 Type: Deepwell Capacity: 120 Cub / H Cargo Emergency Pump: 1 Type: Portable Capacity: 120 Cub / H Ballast Handling Main Pump: 2 Type: Centrifugal Capacity: 200 Cub / H</p> <p><b>CARGO HEATING</b> Are There Coils In Cargo Tanks: Yes Total Capacity Of Boilers: 16720 Kcal</p> <p><b>ENGINE DEPARTMENT</b> Main Engine: BERGEN BRM - 9 Output ME KW: 3640 KW - 750 RPM Aux. Engines: 2 x MITSUBISHI S6R Aux. Engines KW: 450 KW Shaft Gen KW: 500 KW Speed: 14 Knot</p>
--	--



## HiCri ERCiLi COLD STORAGE

HiCri Ercili is innovator and reliable supplier and business partner of private, state-owned companies and institutions in our country. The company has started its cold storage activities on food sector in 1999. The plants are the leader in its sector with capacity of storage on whole area in our Country. It requires to store customers' goods in storages with food security system for a long time with same conditions to keep its specialities on every period from its production to its consumption. HiCri ERCiLi is conscious and under the responsibility of being an important connecting link of cold chain.

HiCri ERCiLi offers high quality service in its warehouse where the goods are subject to customs legislation and stored under customs supervision in order to be completed foreign trade operations. HiCri ERCiLi based on customer requirements and standards on period of protection and handling on the purpose of provide the maintainability the foods confidently. Plants are covered by ISO 9001 and ISO22000 standards.

<b>OUR WAREHOUSE AND PROCESS AREAS</b> The size of the land area where the warehouse is located : 229.350 m <sup>2</sup> Total closed storage area : 59.500 m <sup>2</sup> Dry storage area : 2.117 m <sup>2</sup> Capacity of quick-freezing : 200 ton / day	<b>STORAGED PRODUCTS GROUPS</b> White meat and white meat products / Red meat and red meat products Sea Foods Egg and egg products Canned foods Vegetables / Fruits products Varieties of seeds and etc. Milk and Milk products
<b>MACHINERY AND EQUIPMENT</b> Number of electric forklifts : 20 forklifts Number of transpallets with electric platform : 15 transpallets Number of diesel outside forklifts : 3 forklifts	<b>TEMPERATURE AND MOISTURE CONTROLLED STORAGE SERVICES</b> Quick - freezing : -35 °C / - 40 °C Frozen storage : -18 °C / -25 °C Cold storage : 2 °C Cool storage : +15 °C /+18 °C Standard storage : +18 °C
<b>EMERGENCY and SECURITY</b> Fire extinguisher trucks : 2 trucks Total fire hydrant system : 2.288 m Total camera number : 56 cameras	







## GAS STATIONS

Our gas stations established by our founder HiCRi ERCiLi, are operating nonstop since 90s and aims to establish customer loyalty besides high customer satisfaction with fuel, autogas, shopping, water and air and car washing services.

There are 4 gas stations operating within our company and all are PETROL OFiSi vendors. Our stations' markets are open 7/24 for shopping. Food products, water, cigarets, mineral oil group, automobile accessories, antifreeze, cleaning products are available in addition, we also have toys in our shops. Customers are needed to be satisfied even after the sale, so we adopt customer satisfaction as the ground rule in order to make a difference, stand out amongs our competitors, grow and gain profits. Therefore, we provide ISO 9001 certified premium service with our high quality, customer oriented mentality and clean fuel guarantee with our friendly, attentive and experienced staff.

### OUR GAS STATION ADDRESSES;

Garaj Station;  
Balıkesir Asfaltı 4.km/Bandırma  
T:+90 266 733 83 84 / 84 18

### Prenlik Station;

Balıkesir Asfaltı 5.km/Bandırma  
T:+90 266 721 01 02 / 00

### Akçapınar Station;

Karatoprak Mevkii Akçapınar/Bandırma  
T:+90 266 743 91 61

### Dağkadi Station;

Dağkadi/Karacabey  
T: +90 224 691 21 49-50



## OUR BUSINESS ETHIC RULES



### Honesty

For our all business processes and relations; Trueness and honesty are our primary values. We act with trueness and honesty with in our relations with our employees and stakeholders.

### Privacy

Private and confidential informations; These include, informations which can cause disadvantage in competition of HiCRi ERCiLi, trade secrets, unpublished financial and other informations to society, informations related with personal rights and be concluded "confidentiality agreement" with third parties.

From our point of view, leaking any confidential information out which is belonging to HiCRi ERCiLi and with usage of them to get trade interests is definitely not acceptable.

### Conflict of Interest

As HiCRi ERCiLi employees, we aim to avoid from conflict of interest. We do not get personal profit with taking advantage of our current work from via personal, family, acquaintances and persons and institutions which we are in business.

### Responsibilities

Alongside our legal responsibilities; on behalf of our company, we attach importance to fulfill our identified responsibilities to our customers, employees, suppliers and business partners, competitors, society, humanity.



*Reliable and Innovative*



# HİCRİ ERCİLİ

#### HEADQUARTER

600 Evler Mh. Balıkesir Asfaltı  
Sağ Taraf No: 72 10200  
Bandırma / BALIKESİR  
T: +90 266 721 06 70 (5 Hat)  
F: +90 266 721 06 74  
info@hicriercili.com.tr

#### MERSİN BRANCH

Rüştü Kazım Yücelen Cd.  
Mersin Tarsus OSB. No.:3  
AKDENİZ/MERSİN  
T: +90 324 676 42 28  
F: +90 324 676 42 28  
mersin@hicriercili.com.tr

#### İZMİT BRANCH

Karadenizliler Mh.  
Barbaros Cd. No: 105  
Başiskele / KOCAELİ  
T: +90 262 349 25 60  
F: +90 262 349 35 90  
izmit@hicriercili.com.tr

#### CORLU BRANCH

Yulaflı Mücavir Hacı  
Şeremet 6. Sk No:15/A  
Ergene/TEKİRDAĞ  
T: +90 282 676 41 01  
F: +90 282 676 42 98  
corlu@hicriercili.com.tr

#### İSTANBUL BRANCH

Barbaros Mh. Alzambak Sk.  
Varyap Meridian Grand Tower  
A Blok Kat:4 D:54 Batıataşehir  
Ataşehir/İSTANBUL  
T: +90 216 491 02 59  
F: +90 216 491 02 58  
fix@hicriercili.com.tr

#### YALOVA SHIPYARD

HİCRİ ERCİLİ TERSANECİLİK A.Ş.  
Devletyolu Altı Mevkii  
Tersaneler Cd. No:70/2  
Altınova/YALOVA  
T: +90 226 461 51 36  
F: +90 226 461 51 35  
shipyard@hicriercili.com.tr

AMSTERDAM BRANCH: 00 31 246 71 909 Authorized; Ersoy Toprak

[www.hicriercili.com.tr](http://www.hicriercili.com.tr)