

M.K.Precision Metal Parts Private Limited

An ISO 9001 : 2015 Certified Company

*Excellent Quality,
Reliable Service*



Plot No. A-791/10, Village Khairne, T.T.C.
Industrial Area,
Navi Mumbai – 400 710

COMPANY PROFILE

**ISO 9001-2015
certified State of
the art
manufacturing
facility based in
Mumbai, India**

Since its inception in 2004, we have dedicated our self to providing reliable and quality products and services for various industries

The company has come a long way since it's inception with products for General Engineering Industry

Our Fabrication Facility is one of the best in it's segment

We will make 'Engineering Need Of Yours - A reality with 'Excellent Quality and Reliable Support'

★ ***Vision –***

To be reputed organization in the field of customized engineering solution and complete pharmaceutical solution.

★ ***Mission –***

The Company wishes to pursues the goal of collective excellence through personal and collaborative efforts to enhances health, safety and welfare by providing economical, responsive and effective professional engineering services.



Value Proposition

- ▶ Single point of contact for complete turnkey solutions.
- ▶ Makes for better coordination & integration of services as compared to when multiple players are involved for a single project.
- ▶ This leads to seamless model of work without any hiccups.
- ▶ As a result, pace of work is maintained right from the start to the end.
- ▶ Optimum quality of work is ensured thereby.
- ▶ Our Core Competencies : Consulting, Feasibility, Design, Engineering



FACILITIES AVAILABLE WITH US



Well trained staff in all the department

- 40,000 Sq. Ft. Engineering Area
- AMADA -Japan Make CNC Punching, Press Brake Bending , Laser Cutting & Lathe Machine
- Vertical Machining Centre
- Shearing Machine
- Multiple capacity Power Press
- “PUF” filling facility
- Powder Coating Unit- 12 Tank Process

WE ARE AN EMINENT PLAYER IN CUSTOMISED SS SHEET METAL FABRICATION INDUSTRY



**YOU NAME IT
...WE MAKE IT!!**

PHARMA INDUSTRY



REVERSE LAF



HORIZONTAL LAF



VERTICAL LAF



BIOLOGICAL SAFETY CABINET
(WITH VIEW PANEL)

MOC: S.S.304 / 316 construction **Accessories:** Minipleat Hepa filters & pre filters , UV Light with Hour Meter , Fluorescent lights, Motors with/without VFD, Magnehelic Gauges , PVC Curtains , Double Shaft Motors with impellers, Prebuffed /Matt finish. Plain Table Top with polycarbonate side Panels & PU Castor wheels.



DYNAMIC PASSBOX



STATIC PASSBOX

MOC: S.S.304 / 316 construction
 Wall/floor mounted type.
Accessories: Mechanical
 /Electromagnetic door interlocking.
 Prebuffed /Matt finish. Toughened
 glass/ polycarbonate view Panels.
 Statically & dynamically balanced
 motor blowers, primary &
 prefilters, Logic controller with
 isolator switches, UV Light with
 hour meter.



BAG-IN-BAG-OUT HOUSING

SS,GI/CRCA Powder coated construction Duct Mounted or Plenum mounted type



AIR SHOWERS

G.I./CRCA Powder coated /S.S.304 construction. toughened glass view panels, motor blower assembly, Air nozzles, electrical control panels with door interlocking, 3/0.3 micron final filtration, Fluorescent luminaries.



O-RAB FRAME

S.S.304/316 construction, Matt /Mirror finish. Clear Polycarbonate View panel, Hypalon Gloves; Port size: 8"; Thickness: 15 mil; Length: 32"; Hand size: 9 Ambidextrous with S.S.Rings, PU Castor wheels.



ACOUSTIC ENCLOSURES

Acoustic enclosures for DG Sets, chillers, high CFM Blowers for noise reduction with rock wool / glass wool insulation material.



UV SHOE RACK

S.S.304 construction, Matt /Mirror finish. Sliding Doors with Locks, for keeping shoes in OT. Toughened glass view panel.

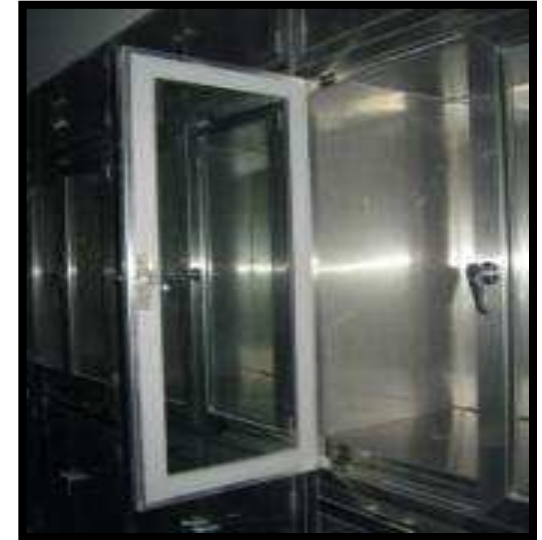
CLEAN ROOMS FURNITURE



GARMENT LOCKER



STORAGE RACK



AIRPACK CUPBOARD



CUPBOARD



LAB LOCKERS



SS LOCKERS

QC Lab Furniture





SCRUB TANK



CRASH CART



AUTO CLAVE



BEDED PANEL

LEADING MANUFACTURER OF AHU



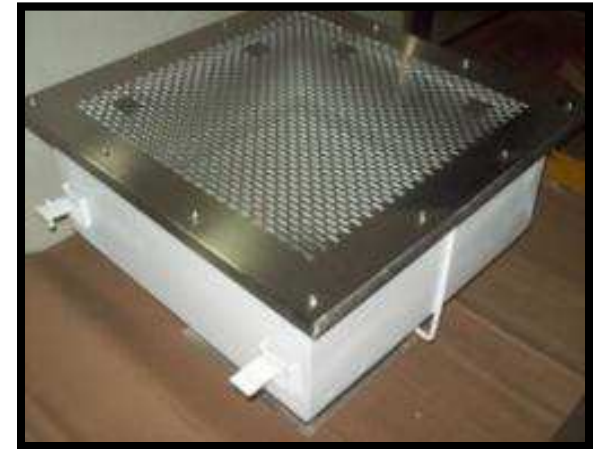
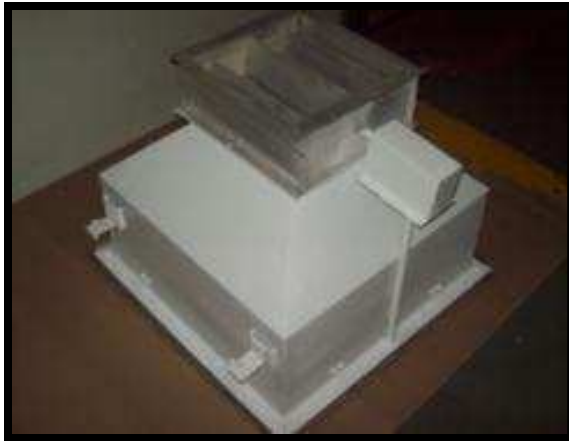
AHU SINGLE DECKER



AHU DOUBLE DECKER

AL. EXTD. PROFILES-THERMAL BRAKE/NON THERMAL BRAKE. WITH/WITHOUT
INTERNAL COVING. PANELS OF 25 MM/50MM,CFC FREE PUF INSULATION 40KG/M3.
BASE FRAME,NYLON CORNERS,HINGES,AL. AEROFOIL VOLUME CONTROL
DAMPERS,DX/CHW COILS

TERMINAL FILTER BOXES



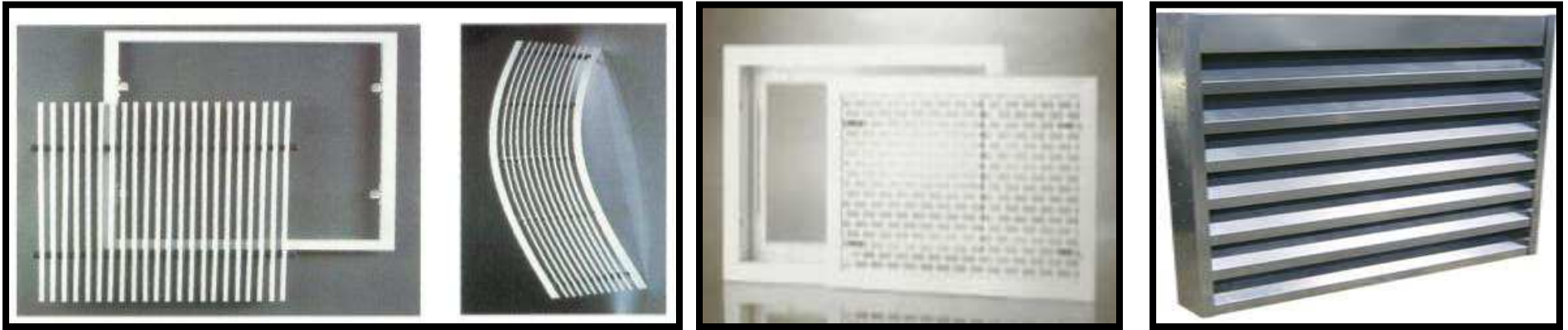
RISER (WITH GRILL)



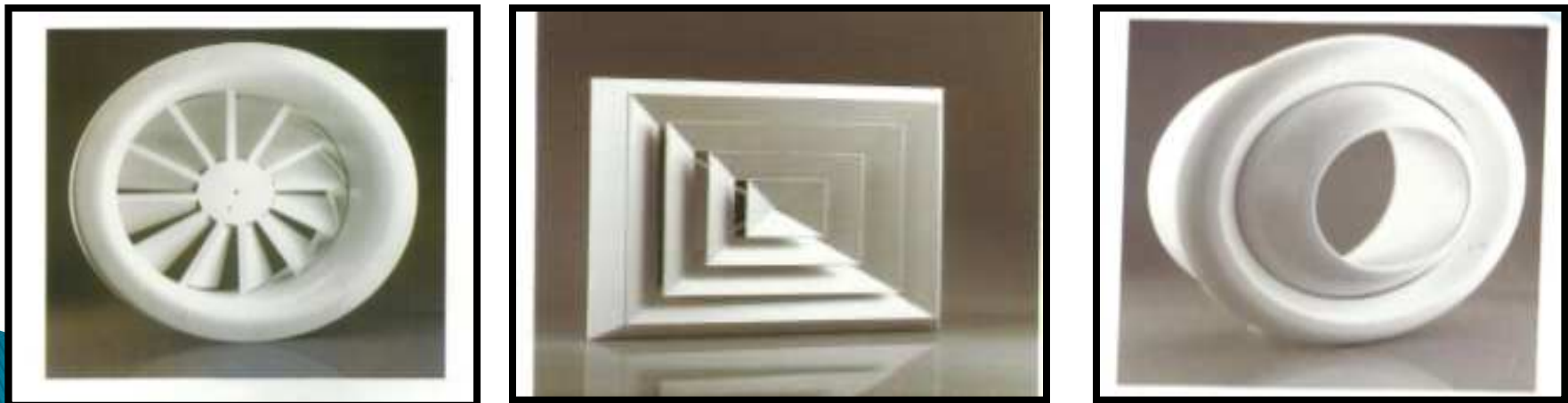
DUCTING
SS / GI



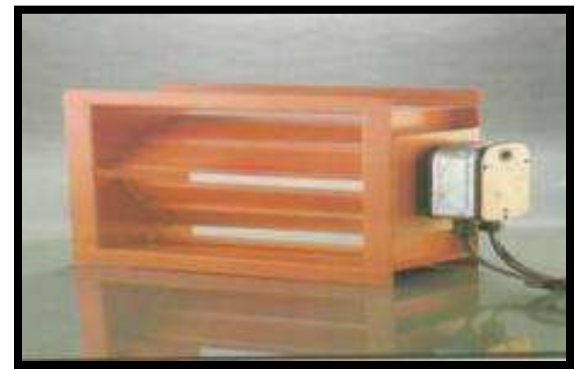
VARIATION IN GRILLS



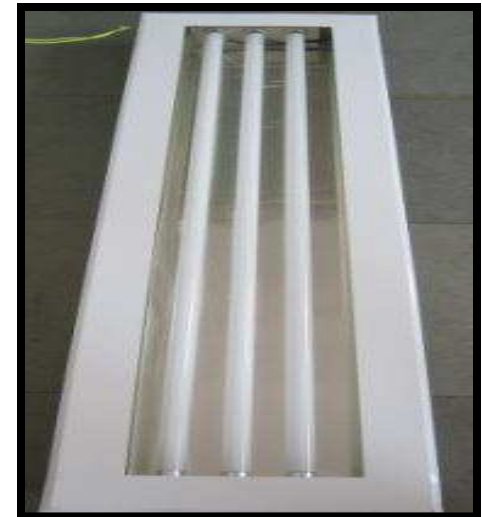
DIFFUSERS



VOLUME CONTROL DAMPERS



TUBE LIGHT FIXTURES



MODULAR PANELS & DOORS

DOOR & VIEW PANEL, WALL PANEL WITH EPOXY FLOORING & FALSE CEILING WITH CLEAN ROOM LIGHT FIXTURES, SS RAILING & COVING



FDC, Roha



Bio Next, Mumbai



Godrej Hospital, Mumbai – Modular OT



Surya Hospital, Mumbai



Baptist Hospital, Bangalore



Metallic Sliding Doors (Manual & Automatic)



Turnkey Projects – Horiba, Haridwar

SCOPE OF WORK – CIVIL, FACADE, HVAC, ELECTRICAL, PANELING

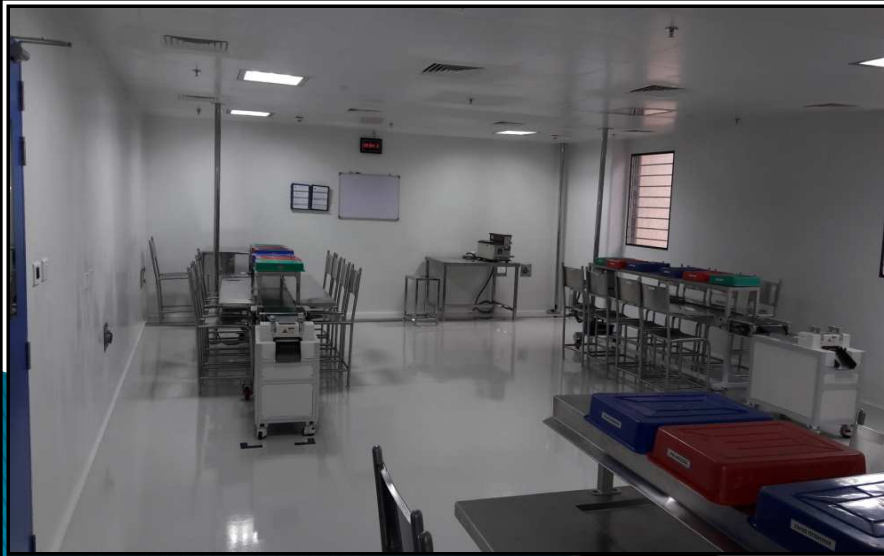






Alere Medical, Gurgaon

SCOPE OF WORK – CIVIL, PANELING, MECHANICAL – PIPING, BMS, HVAC, ELECTRICAL WORK



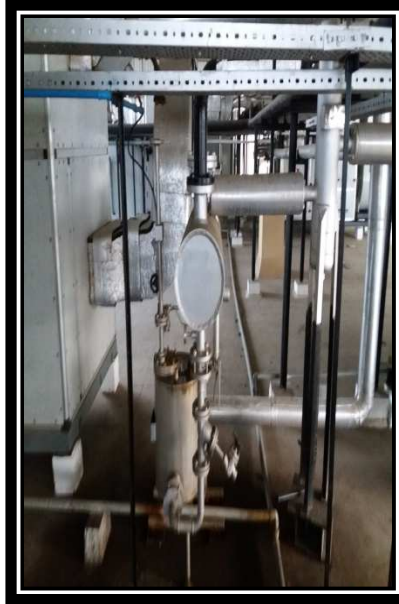




Process Utility



Air Compressor



Condensate
Recovery System



Transformer-2500 KVA

Dehumidifier

Plant Room



Project Management Consultancy

As Project Managers, we help the client to control the following constraints of the project

- Cost
- Schedule
- Requirements
- Resources

As Project managers, we offer the following services to the client

- Project Planning
- Quality Control – Regular inspection of the works done as per OEM and Best Industry practices
- Billing and Bill certification
- Value engineering



M K Precision Validation Service House



CAPTURE HOOD



PAO TEST



FLOW PATTERN



PARTICLE COUNT

INDIAN RAILWAYS

WE ARE THE AUTHORIZED VENDORS OF INDIAN RAILWAYS.

PRODUCTS
ARE
EXCLUSIVELY
FOR INDIAN
RAILWAYS

SS MODULAR TOILET



RETENTION TANK



SS RAILINGS



SS DUST BIN



OUR KEY CLIENTS

INDIAN RAILWAYS (RCF, KAPURTHALA)

PHARMA INDUSTRIES

- ▶ HORIBA INDIA PVT.LTD. (HARIDWAR)
 - ▶ CIPLA (MUMBAI, BENGALURU, INDORE, SIKKIM)
 - ▶ WANBURY.(MUMBAI)
 - ▶ NGL.(TARAPUR)
 - ▶ UNIMAX (TARAPUR)
 - ▶ SANDOZ
 - ▶ INTERMED.(BENGALURU)
 - ▶ HITESH PLASTIC
 - ▶ JOHARI DIGITAL.(JODHPUR)
 - ▶ PAR FORMULATION(CHENNAI)
 - ▶ INOGENT(VIZAG)
 - ▶ EISAI PHARMA
 - AJANTA PHARMA
 - D.K PHARMA
 - VITAL LABORATORIES-VAPI
 - ALERE MEDICAL PVT LTD
 - CAMUS PHARMA PRIVATE LIMITED (JAIPUR)
 - HOSPIRA.
 - MYLAN LAB
 - STERILINE PHARMACEUTICAL EQUIPMENTS
 - RANBAXY LABORATORIES LIMITED (PUNJAB)
 - INFOSYS
 - OKASA, SATARA
 - OPAL HVAC
 - ORCHID PHARMA
- 

PHARMA INDUSTRY

- ▶ PARAMOUNT POLYPLAST
- ▶ UNICHEM
- ▶ SD BIO SENSOR PVT LTD
- ▶ IMA-PG INDIA PVT.LTD (NAVI-MUMBAI)
- ▶ AVANTGARDE CLEANROOM & ENGG SOL PVT LTD
- ▶ PAM-GLATT PHARMA TECHNOLOGIES
- ▶ PHARMA ACCESS
- ▶ BULLOWS PAINT EQUIPMENTS PVT LTD
- ▶ SUVIDHA ENGINEERS INDIA PVT LIMITED (ALL INDIA BRANCHES)
- ▶ FRESENIUS.KABI ONCOLOGY LTD (BADDI,HP)
- ▶ TRANS TECH TURNKEY PVT.LTD. (PUNE)
- SUN PHARMA
- RANK ORGANICS (TARAPUR)
- SCHON PHARMACEUTICALS-INDORE
- IVES DRUGS- GHATABILLOD
- PFIZER
- ISCON SURGICALS- JODHPUR
- ESSENTIA PHARMA
- HVAX
- KREMOINT
- AEROFLEX
- U.S.V

Please click on the below link to view our projects

- Sahaj Stem Cell Therapy, Andheri

(<https://youtu.be/v4y9mkG2OKc>)

- Paramount Polyplast, Thane

(<https://youtu.be/0eHWITY8DS0>)

*Kindly click on the link in the slideshow mode.

HOSPITALS

- ASIAN HEART HOSPITAL, MUMBAI
- GODREJ HOSPITAL, MUMBAI
- NOOR HOSPITAL, MUMBAI
- BAPTIST HOSPITAL, BANGALORE
- LILAVATI HOSPITAL, MUMBAI
- HINDUJA HOSPITAL, MUMBAI
- TATA MEMORIAL HOSPITAL, MUMBAI
- GLOBAL HOSPITAL, MUMBAI
- SURYA HOSPITAL, MUMBAI
- FORTIS HOSPITAL, MUMBAI
- WOCKHARDT HOSPITAL, AURANGABAD
- HIRA MONJI HOSPITAL, MULUND
- SEVEN HILL HOSPITAL

OTHER INDUSTRIES

- ABBOTT HOTEL
- RUBY HALL
- INFINITY MALL, PUNE
- UNITED 21
- PAN CARD CLUB, PUNE
- MARKET CITY MALL, KURLA



Certificate OF REGISTRATION

This is to Certify that the
Quality Management System



M.K. PRECISION METAL PARTS PVT. LTD.
PLOT NO- A-791/10, VILLAGE KHAIRNE, T.T.C. INDUSTRIAL AREA,
NAVI MUMBAI 400710, MAHARASHTRA, INDIA.

has been independently assessed and is compliant
with the requirements of

ISO 9001:2015

This certificate is applicable to the following product or service ranges:

MANUFACTURE AND SUPPLY OF AIR HANDLING UNITS, CLEAN ROOM, MODULAR PANELS,
CLEAN ROOM EQUIPMENT, HVAC PRODUCTS MANUFACTURE AND SUPPLY OF
PRECISION FABRICATED, MACHINED AND SHEET METAL PARTS.

:: Certificate No :: IN9237A

Date of this initial Registration

08 October 2018

Date of this certificate

08 October 2018

Surveillance audit on or before

03 October 2019

Recertification Due/ Certification expiry

07 October 2021

Accreditation

Validity of this Certificate is subject to completion of surveillance audit on or before of due date in case surveillance audit not allowed
to be conducted the Certificate shall be suspended/ withdrawn. This certificate is property of ICL. Certifications
and shall be returned immediately when demanded.

Integral Certification (P) Ltd.

U-60 (3rd Floor), Shakar Pur, Laxmi Nagar, Delhi-110092

E-mail: info@iccert.com

Website : www.iccert.com

Contact No : +91-11-33257055

For verification and updated information concerning the present certificate visit to www.iccert.com

This Certificate is the property of Integral Certification Private Limited and shall be returned immediately when demanded.


Director



ICL/FM-001/REV05

M.K.Precision Metal Parts Private Limited

WWW.MKPRECISION.NET

Thank you

